

**ecooustic<sup>®</sup>** tile: matrix + linear + domino



INSTYLE

# Introduction



Introducing three new sound absorbent tile products: Matrix, Domino and Linear from the ecooustic® collection.

The sophisticated tile designs are inspired by geometry and mathematics. Subtle and commanding patterns can be created by altering the orientation of the tiles to build formations that play with light and shadow.

Ecooustic® Matrix, Domino and Linear are based on low energy manufacturing and made from 100% polyester with a minimum of 50% recycled content. The tiles are certified low-VOC and Greentag Level A Certified.

Available in 16 colourways, the versatile tiles are suitable for most interior spaces and easy to install onto walls, screens, partitions or ceilings.

Ecooustic® Infills increase sound absorbency by at least 35% and are available for all tiles.

Please refer to website for full product information, fire tests, CAD drawings and contact details.



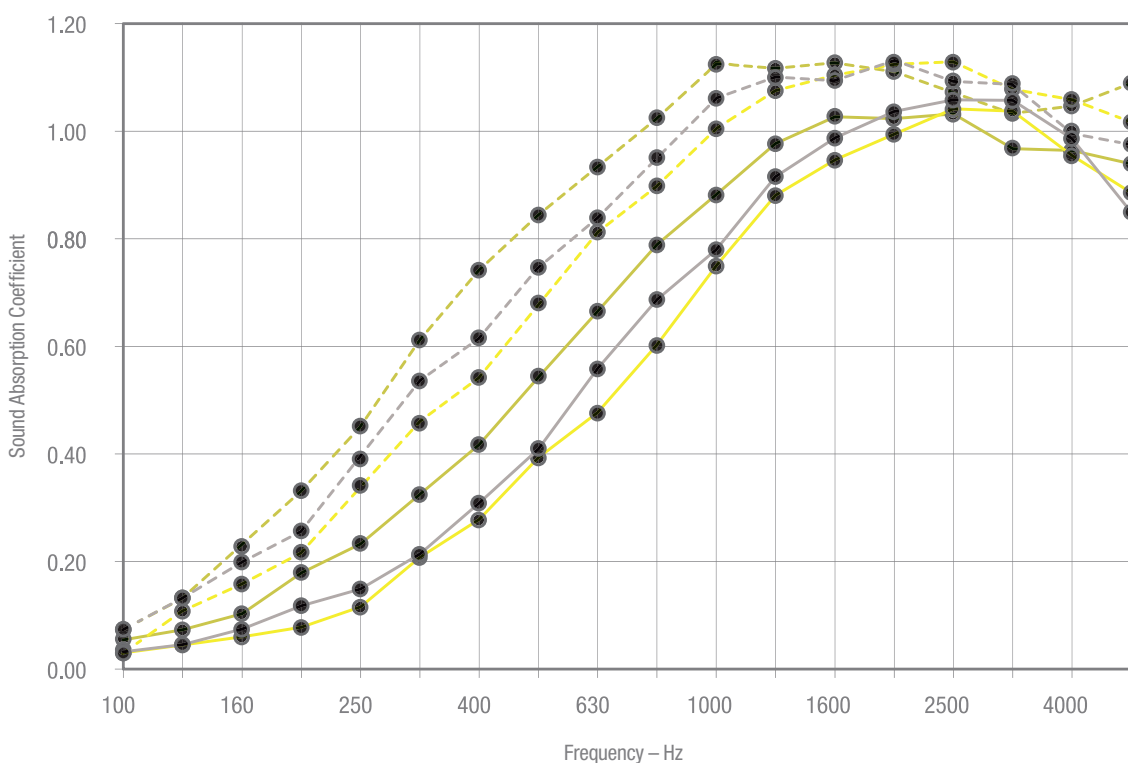
**Ecooustic® Matrix Tile:**  
Taupe, Jet



## Acoustic Information

Ecoustic® Matrix, Linear and Domino provide a design solution that reduces unwanted and distracting noise. The tiles will assist in absorbing, scattering and diffusing sound, resulting in improved acoustics within an interior space.

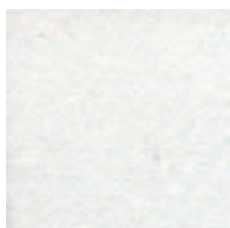
Product	NRC	Weighted Sound Absorption Coefficient $\alpha_w$
Ecoustic® Matrix	0.65	0.55 (MH)
Ecoustic® Matrix with Ecoustic® Infill	0.90	0.75 (MH)
Ecoustic® Linear	0.60	0.45 (MH)
Ecoustic® Linear with Ecoustic® Infill	0.85	0.70 (MH)
Ecoustic® Domino	0.55	0.40 (MH)
Ecoustic® Domino with Ecoustic® Infill	0.80	0.65 (MH)



- Ecoustic® Matrix
- - Ecoustic® Matrix with Ecoustic® Infill
- Ecoustic® Linear
- - Ecoustic® Linear with Ecoustic® infill
- Ecoustic® Domino
- - Ecoustic® Domino with Ecoustic® infill



## Ecooustic® Felt Finishes



White



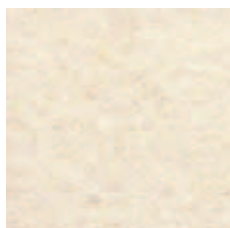
Yellow



Orange



Sky



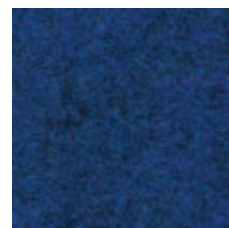
Cream



Lime



Red



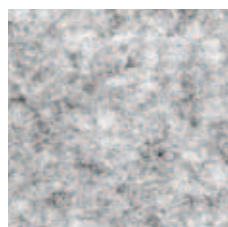
Cobalt



Natural



Green



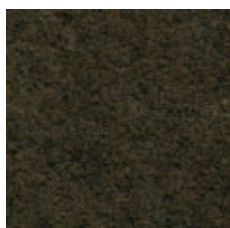
Light Grey



Charcoal



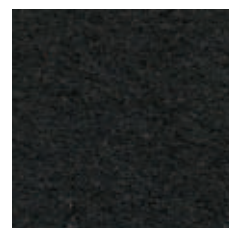
Taupe



Caper



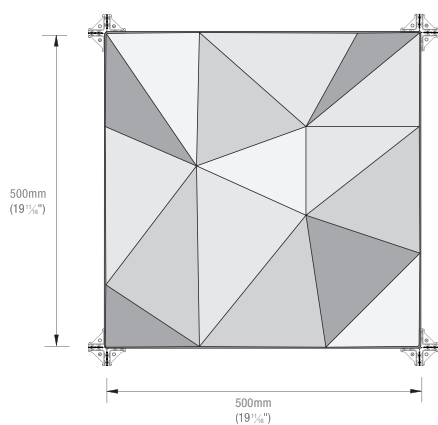
Pewter



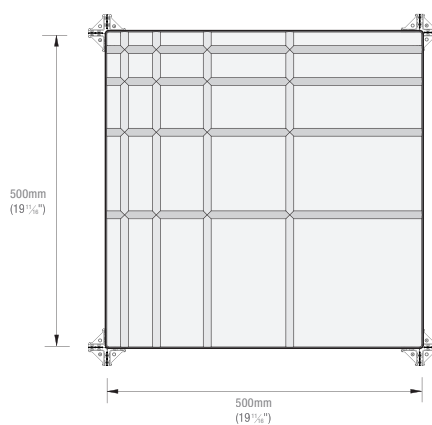
Jet

## Ecooustic® Tile

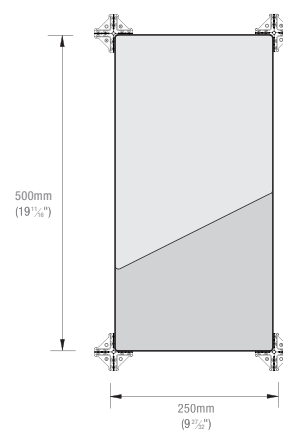
**Matrix**

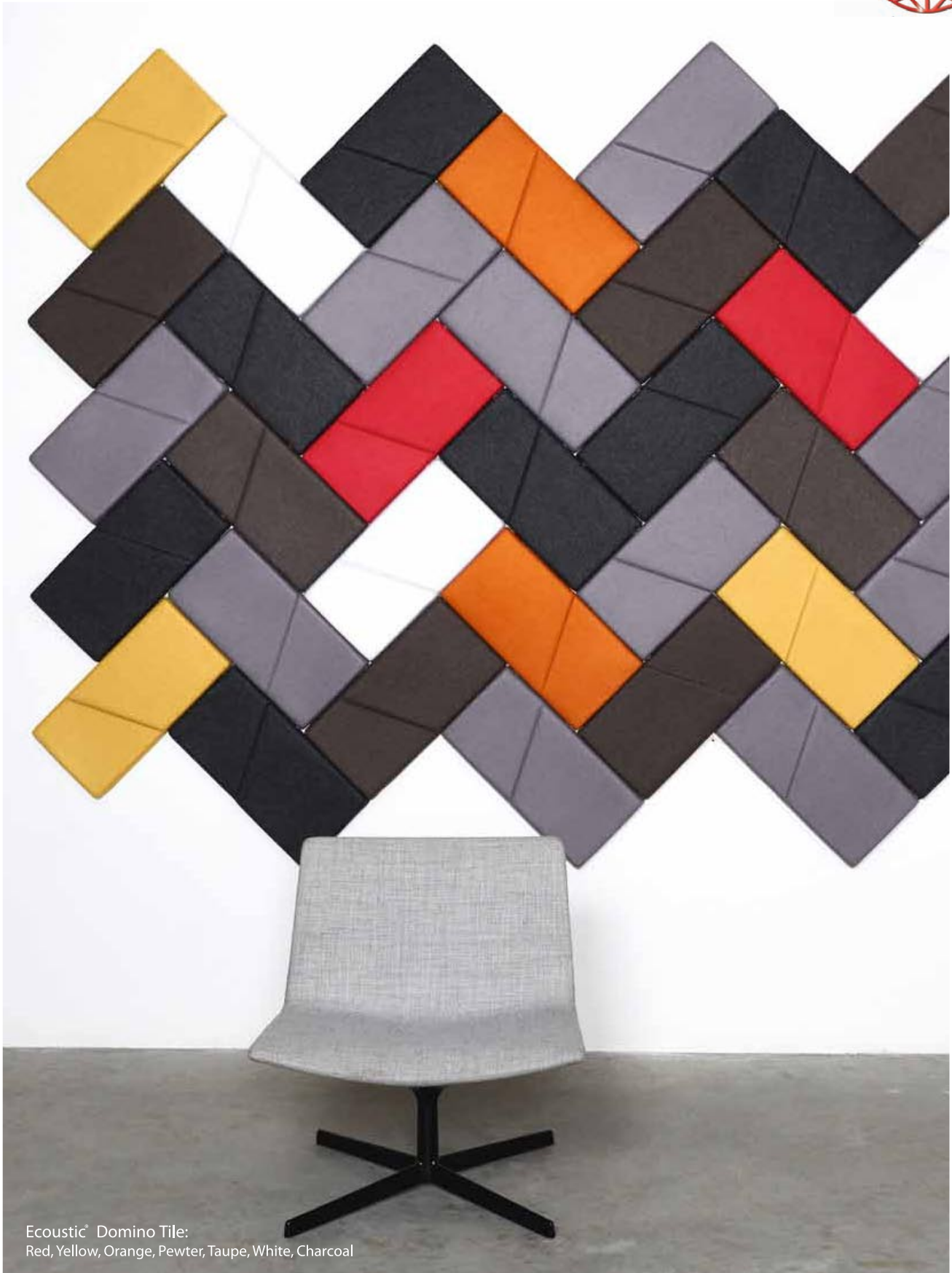


**Linear**



**Domino**





Ecoustic® Domino Tile:  
Red, Yellow, Orange, Pewter, Taupe, White, Charcoal

#### TRANS SEAS

USA Office: 4250 N. Drinkwater Blvd., Fourth Floor, Scottsdale, Arizona 85251-3693 USA

Tel: (480) 303-1659 · Fax: (480) 425-4986 · [www.transseas.com](http://www.transseas.com)

Middle East Office: P.O. Box 211622, Dubai, UAE

Tel: (971-4) 423-2080 · Fax: (971-4) 423-2081 · [info@transseas.com](mailto:info@transseas.com)